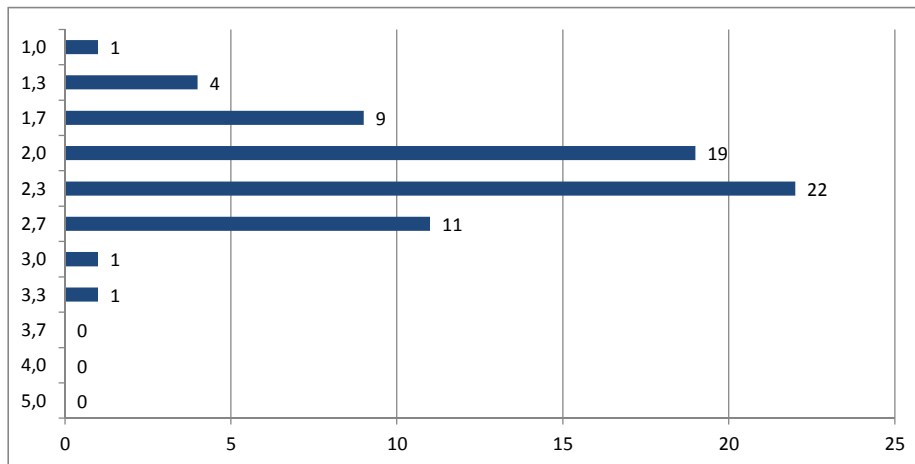


Noten im Seminar zum marktorientierten Management - Planspielseminar "Markstrat" im WS 2014/2015



Schnitt: 2,1

Die **Klausureinsicht** findet am **17.03.2015 von 17 bis 18 Uhr** im Marktforschungslabor des Lehrstuhl für Marketing & Business Development statt.

Die erforderliche **Anmeldung** hierzu kann (mit Angabe der Matrikelnummer) **bis zum 16.03.2015** per Email an aline.lenzing@uni-hohenheim.de erfolgen.

Nr	Matrikelnummer	Punkte Präsentation (max = 60)	Punkte Spiel (max = 60)	Punkte Klausur (max = 60)	Note gesamt
1	427175	51,0	51,0	39,0	2,3
2	498450	51,0	54,0	39,0	2,0
3	506384	48,0	51,0	39,0	2,3
4	514758	48,0	45,0	42,0	2,3
5	520878	57,0	54,0	42,0	1,7
6	526542	57,0	54,0	36,0	2,0
7	526746	51,0	57,0	45,0	1,7
8	527949	51,0	51,0	39,0	2,3
9	528582	51,0	48,0	39,0	2,3
10	529497	48,0	57,0	33,0	2,3
11	530994	48,0	51,0	33,0	2,7
12	531278	54,0	54,0	42,0	2,0
13	533755	48,0	57,0	39,0	2,0
14	538501	54,0	54,0	21,0	2,7
15	548180	48,0	45,0	39,0	2,7
16	549105	48,0	57,0	33,0	2,3
17	549192	51,0	54,0	48,0	1,7
18	549503	57,0	60,0	39,0	1,7
19	550084	57,0	54,0	57,0	1,3
20	550220	51,0	57,0	36,0	2,0
21	550796	48,0	48,0	39,0	2,3
22	551193	48,0	51,0	39,0	2,3
23	551481	48,0	45,0	45,0	2,3
24	551795	54,0	54,0	36,0	2,0

Nr	Martikel- nummer	Punkte Präsentation (max = 60)	Punkte Spiel (max = 60)	Punkte Klausur (max = 60)	Note gesamt
25	552095	57,0	60,0	48,0	1,3
26	552231	48,0	48,0	36,0	2,7
27	552299	48,0	51,0	39,0	2,3
28	553007	51,0	57,0	48,0	1,7
29	553405	48,0	51,0	36,0	2,3
30	553492	48,0	57,0	45,0	2,0
31	553861	51,0	54,0	42,0	2,0
32	553874	51,0	51,0	36,0	2,3
33	553968	57,0	54,0	33,0	2,0
34	554103	45,0	48,0	45,0	2,3
35	554420	51,0	57,0	45,0	1,7
36	554530	57,0	60,0	45,0	1,3
37	554886	48,0	45,0	39,0	2,7
38	554983	48,0	45,0	45,0	2,3
39	554996	54,0	54,0	42,0	2,0
40	555254	48,0	45,0	39,0	2,7
41	555717	54,0	54,0	39,0	2,0
42	555995	48,0	51,0	45,0	2,0
43	556088	54,0	54,0	48,0	1,7
44	556826	45,0	48,0	22,0	3,3
45	556871	51,0	54,0	39,0	2,0
46	556897	48,0	51,0	42,0	2,3
47	557281	48,0	51,0	36,0	2,3
48	558222	48,0	48,0	36,0	2,7
49	558248	48,0	48,0	29,0	3,0
50	558293	54,0	54,0	39,0	2,0
51	558400	45,0	48,0	36,0	2,7
52	558798	57,0	60,0	48,0	1,3
53	558879	57,0	60,0	60,0	1,0
54	558992	51,0	51,0	39,0	2,3
55	559564	54,0	54,0	48,0	1,7
56	559768	48,0	45,0	39,0	2,7
57	561206	48,0	48,0	39,0	2,3
58	561578	51,0	48,0	39,0	2,3
59	561976	48,0	45,0	51,0	2,0
60	563987	51,0	51,0	42,0	2,0
61	565891	51,0	48,0	45,0	2,0
62	566311	48,0	45,0	51,0	2,0
63	567161	51,0	54,0	25,0	2,7
64	567491	57,0	54,0	39,0	2,0
65	568283	48,0	51,0	27,0	2,7
66	568490	54,0	54,0	51,0	1,7
67	569758	45,0	48,0	45,0	2,3
68	570695	51,0	48,0	39,0	2,3

Alle Angaben sind ohne Gewähr.

Hohenheim, den 04.03.2015
gez. Markus Voeth